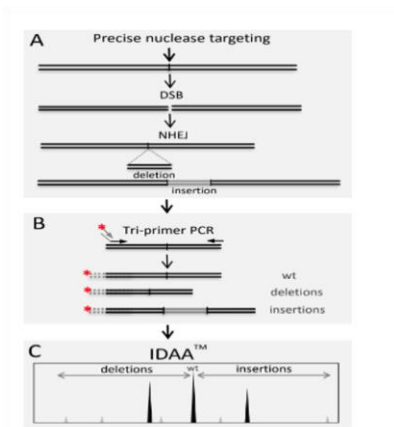

COBO Q NEWSLETTER

CRISPR InDel Profiling Platform (CIPP)

Identify and Quantify InDels up to 1000bs in your CRISPR cells



Details:

- Powered by **IDAA method**.
- **Quantification** of insertions/deletions (InDels) in pools and clones (example [here](#)).

- Identification of **down to single base** InDels.
- Detection of down to 0.1% InDel events.
- **Detection of large deletions** up to 1000bs.
- Detection small insertions up to 150bs.
- Fast InDel profiling in **high-throughput. format** in pools and clones.
- 96 samples can be analysed in 2 hours.
- Easy detection of bi-allelic targeting events in single cell clones.
- Easy analysis of profiles using the InDel analysis software: [ProfileIt](#).
- Work with **any nuclease system** (Meganucleases, CRISPR, ZFN, TALEN).

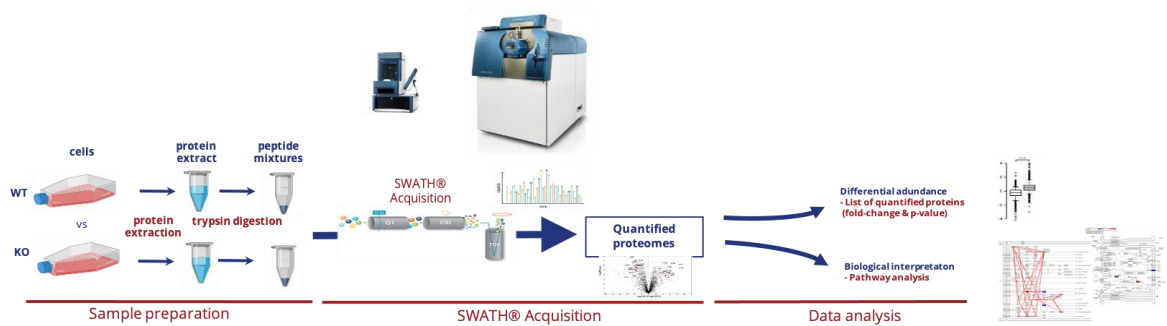
Applications based on customer projects:

- gRNA validation.
- Selection of pools or/and clones with out-of-frame InDels.
- Tag confirmation (up to 150bs).
- Cas9 kinetics.
- Cas9 delivery methods.
- NHEJ inhibitor screening/validation.
- HDR inhibitor screening/validation.
- Drug-resistance allele generation (in-frame insertions/deletions).
- QC of CRISPR modified cells.
- Off-target analysis.

Read more [here](#)

Proteomic Expression Analysis Platform (PIPPR)

Expression Analysis of Proteome Changes in CRISPR cells



Details:

- **Identify and quantify** proteome expression (5,000-6,000 proteins) in any cell line of interest.
- **No need for antibodies** or sequence information.
- **Simple setup** - Just ship total extracted proteins from your cell line of interest and you will receive report within 4-6 weeks.

Applications:

- Detect unintended changes in cells modified with CRISPR.
- Confirm knockouts of target protein.
- Compare proteome expression between 2 conditions - like Wt and Knockout.
- Detailed pathway and gene family expression analysis.
- Quality control of modified cells.
- Protein expression analysis of potential off-target sites.
- Treated versus non-treated cells.
- Base-editors off-target analysis.
- Safety and efficacy studies.

Read more [here](#)

CRISPR Medicine News (CMN)

A selection of interviews and updates from the CRISPR Medicine field
April/May

- [Clinical Update: TALEN-Edited CAR T-Cell Therapy for Large B-Cell Lymphoma](#) (May 5 2021)
- [Simplest Possible Modification Rescues Dystrophin Expression in Duchenne](#) (May 3 2021)
- [CRISPR CAR T-Cell Therapy Clinical Update](#) (April 27 2021)
- [Replacing An Entire Faulty Gene To Reverse The Blood Disease \$\beta\$ -Thalassemia](#) (April 26 2021)

CMN Webinars

Next CMN Webinar: CRISPR Delivery Systems, May 26th 2021 - More [info](#)



CMN Webinars – Original

Wednesday May 26, 2021 3:00 pm – 6:00 pm CEST Free Webinar

CRISPR DELIVERY SYSTEMS

Confirmed Speakers:

- Yizhou Dong**, Associate Professor, Ohio State University, US
- Christian Grøndahl**, Dr. Med. Co-founder & CEO, SNIPR BIOME, DK
- Yuan Ping**, PhD, Principal Investigator, Zhejiang University, China
- Anna Gutkin**, PhD, Dan Peer's Lab in Tel Aviv, Israel

Organizer: CMN

CRISPR News MEDICINE

About CRISPR Medicine News

COBO Technologies launched [CRISPR Medicine News](#) in 2019. With more than 11,000 readers per month from over 100 countries, this is now the leading news media in the CRISPR Medicine field.

Read in-depth interviews with leading researchers and specialist working with applications in CRISPR Medicine. Content is focused around; reagents, delivery methods, safety, quality control, clinical trials, standards and best practices.

The CRISPR Medicine News team strives to bring the best and most interesting interviews and news on everything related to this exciting and rapidly emerging field.

Do you want to request information or ask questions about our QC Products and Services?

[Request more information here](#)

Do you want to sign up to our Newsletter?

[Sign up here](#)



COBO TECHNOLOGIES
QUALITY CONTROL GENOME EDITING
